

FREDERIC TOWNSHIP

RECREATION PLAN 2020-2024

NOVEMBER 15, 2019 NOTE:

This draft includes changes submitted by the Parks and Recreation Committee on November 12. They have updated some of the introduction as well as updates to the goals, Objectives, and action items. A summary of the current survey will be added to this draft.

Presented by:

Frederic Township Parks and Recreation Committee &
Frederic Township Planning Commission

Frederic Township Parks and Recreation Committee:

Anne Goscicki,
Lori Johnson
Bob Pollack
William Sharp
Michelle Stanley
Butch Weaver

Frederic Township Planning Commission

List members here

Assisted by:



Northeast Michigan Council of Governments

Contents

Introduction	1
Community Description.....	1
Location and Geographic Context	1
Population and Housing	1
Natural Resources	4
Existing Land Use.....	6
Administrative Structure and Funding in Frederic Township.....	8
Status Report of all Grant-Assisted Parks and Recreation Facilities.....	9
Recreation Inventory.....	9
Description of the Planning and Public Input Process	14
Goals and Objectives.....	15
Action Program.....	16
Rationale for Township Park Improvements.....	17
Rationale for Trail and Access Site Improvements.....	17
Plan Review and Adoption	18

Introduction

This document, the Frederic Recreation Plan Update - 2019, presents a strategy for future recreational development and programming. This plan update was prepared by the Frederic Township Recreation Committee and is an update of the 2013 Recreation Plan, prepared in accordance with the requirements of the Michigan Department of Natural Resources.

VISION

We visualize a well-serviced and -maintained community that is attractive as a desirable place to live and raise a family, a community whose residents uniformly enjoy a good quality of life and take pride in their surroundings. To further that vision we propose to enhance recreational opportunities at our two community parks, improve public access to the AuSable River, and encourage recreational programming. In addition, we see Frederic Township growing modestly as a tourist destination with convenient facilities for anglers, canoeists, hikers, hunters, bird-watchers, winter sports enthusiasts and others. We also recognized a need to monitor and maintain the high quality of our natural resources, to allow enjoyment of such in an environmentally sensitive manner.

Community Description

Location and Geographic Context

Frederic Township, one of six units of government making up Crawford County. The Township occupies 72 square miles of glacially shaped terrain near the center of the northern half of Michigan's Lower Peninsula (Figure 1). Its gently rolling rural character and heavily forested landscape drained by two magnificent waterways make it very attractive for outdoor recreation as well as year-round and vacation living. Proximity to growing population centers and the facilities they offer add to the township's appeal and create the inevitable challenges represented by potential encroachment.

Accessed from the south and north by I-75 and otherwise served by M-72, County Road-612 and Old US-27 (once the state's main north-south artery), the township falls within easy vehicular reach of several comparatively large communities. Its seat of government, the unincorporated village of Frederic, lies 9 miles north of Grayling, 17 miles south of Gaylord and 25 miles east of Kalkaska (Figure 1); additionally, the Detroit and Mackinac Railway, one of the few active rail corridors left in the region, parallels Old US-27 through Frederic and the eastern part of the township.

Lying as it does in the climate-altering shadow of Lake Michigan and at elevations ranging from 1,100 to 1,400 feet above mean sea level, the township enjoys relatively cool summers and endures moderately harsh winters, in which annual snowfall amounts of 120 inches are not uncommon. As its early settlers learned to their eventual dismay, deforested township land with its poor soils and short growing seasons do not favor conventional farming.

Population and Housing

1,305 persons made Frederic Township their home according to the American Community Survey 2013-2017 5-year estimates, the latest year for which census estimates are available. The 2010 US Census found there were 1,341 year-round residents in Frederic Township (Table 1). In 2010, the township was

fifth in population among the seven jurisdictions comprising Crawford County, and third in density (behind Grayling and Beaver Creek Townships) at 18.6 residents per square mile. As in many rural jurisdictions throughout northern Michigan, part-time or seasonal residents (absentee landowners) make up a significant part of the township's taxpayer base. Approximately 48 percent of the housing units in Frederic Township are classified as "for seasonal, recreational or occasional use" (2010 Census).

Table 1 - Population of Crawford County (MI), by Jurisdiction, Census years of 1970-2010

Jurisdiction	Area ¹	1970	1980	1990	2000	2010
Beaver Creek Township	72		745	1,175	1,486	1,736
Frederic Township	72	782	1,142	1,287	1,401	1,341
Grayling Township	180		4,019	5,647	6,516	5,827
Grayling City	(combined)		1,792	1,944	1,952	1,884
Lovells Township	108		316	420	578	626
Maple Forest Township	36		355	407	498	653
South Branch Township	108		1,096	1,380	1,842	2,007
Crawford County	576	6,482	9,465	12,260	14,273	14,074

¹Square miles Source: U. S. Census Bureau

Largely in correspondence with the distribution of private land, permanent and seasonal township residents tend to be aggregated in four distinct and widely separated areas or neighborhoods: the Manistee and Au Sable River corridors, Frederic village and the township's far northeast corner. This very uneven distribution of its rural population creates for township government a perennial challenge from the standpoint of political representation, especially of those residing in the more remote enclaves. Also, frequent inability to communicate effectively on local issues with tax-paying but absentee property owners, who typically exhibit a fairly high rate of turnover especially in the Manistee River corridor, further compounds this problem.

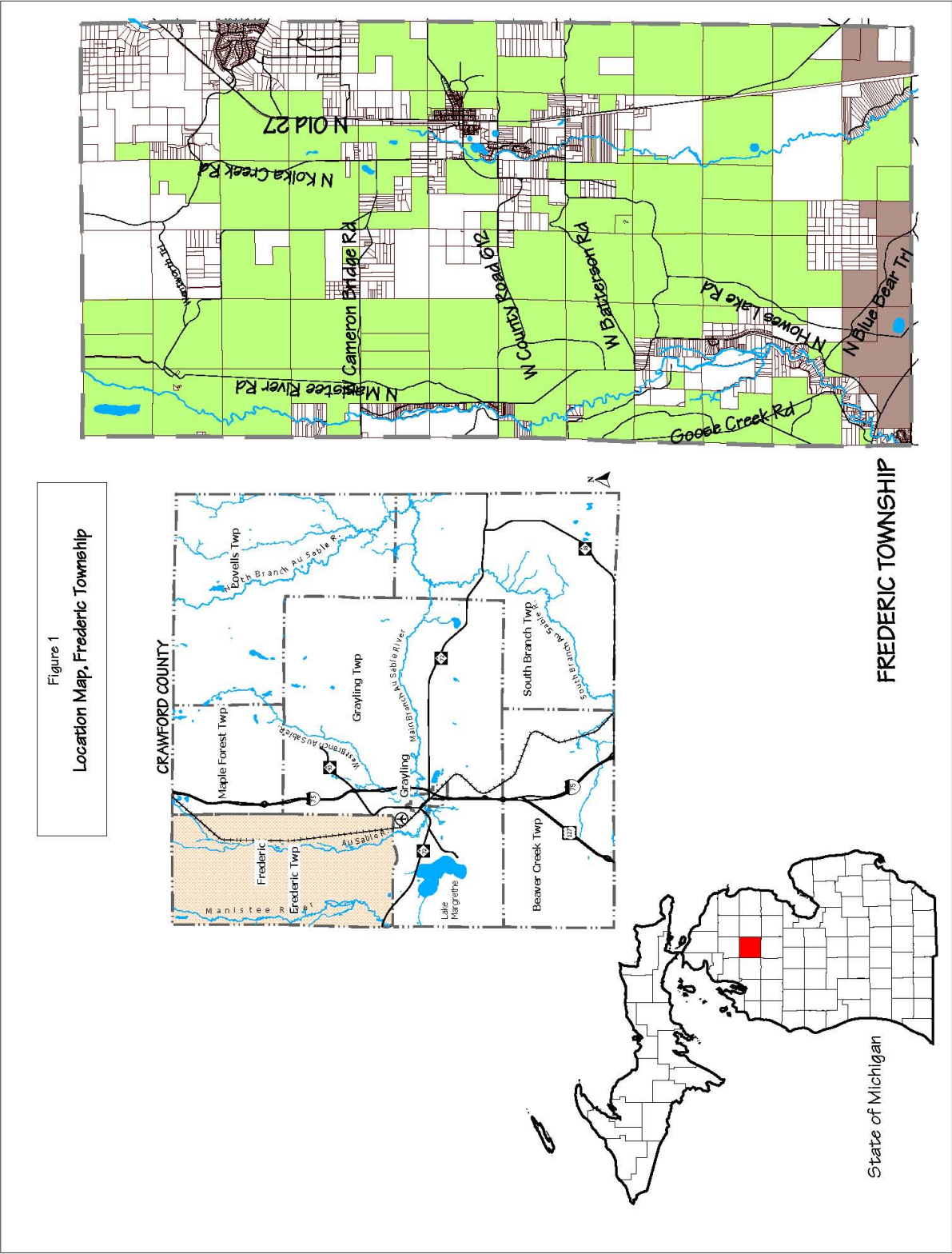


Figure 1 – Location Map

Mirroring that of Crawford County as a whole, the age distribution of Frederic Township residents indicates an older-than-average population Table 2 – Population of Township, County and State, by Age Groups (in years), Census Year 2010. The median age in Frederic Township is 47.5 years old compared with 47.7 for Crawford County and 38.4 for the State as a whole. In many rural areas this often suggests a reduced or, at least, a very limited revenue-enhancing potential for meeting community needs, not to mention a greater-than-average demand for senior-related services.

Table 2 – Population of Township, County and State, by Age Groups (in years), Census Year 2010

Jurisdiction	<5 years		5–17		18–24		25–44		45–64		65+		Total
	No.	%	No.	%	No.	%	No.	%	No.	%	No.	%	
Frederic Township	62	4.6	219	16.3	77	5.7	266	19.8	456	34.0	261	19.5	1,341
Crawford County	664	4.7	2,131	15.1	905	6.4	2,725	19.4	4,721	33.5	2,928	20.8	14,074
State of Michigan		6.0		17.7		9.9		24.7		27.9		13.8	

Source: U.S. Census Bureau

Statistics from the 2010 Census show a total of 1,231 housing units for Frederic Township. Seventy six percent are single-family units, nearly twenty three percent are mobile homes and less than two percent are multifamily units. When compared to the State as a whole, seasonal housing in the Township and County is a significant proportion of housing, as shown in Table 3 – Housing Characteristics, Frederic Township, Crawford County and Michigan – 2000 and 2010.

Table 3 – Housing Characteristics, Frederic Township, Crawford County and Michigan – 2000 and 2010

Jurisdiction	Total Units			Seasonal Units		% Seasonal	
	2000	2010	% Change	2000	2010	2000	2010
Frederic Township	1,092	1,231	12.7	503	586	46.1	47.6
Crawford County	10,042	11,092	10.5	4,112	4,535	40.9	40.8
State of Michigan	4,234,279	4,532,233	7.0	233,922	263,071	5.5	5.8
Source: U.S. Census Bureau							

Natural Resources

The public—largely through reversion—owns approximately 70 percent of Frederic Township, see Figure 1. Most of these lands are classified as forestland that are managed by the Michigan Department of Natural Resources (MNDR) for fiber production and recreation (Table 5), and over which the township has little, if any, control.

The surface geology in Frederic Township consists primarily of two main categories. The glacial outwash sand, gravel and postglacial alluvium is located primarily in wide bands that follow the major rivers. The ice-contact outwash sand and gravel is located in the other areas of the Township. This composition of sand and gravel is why the area is not well suited to agricultural practices.

Frederic Township has extensive forest areas, much of which is in public ownership as depicted in green on Township map shown in Figure 1. The township's public forests, which share regionally in the support of a thriving fiber-products industry, represent extensive wildlife habitat and provide significant opportunity for outdoor recreation. Devastated by rampant exploitation at the turn of the 20th Century, they—mostly second- and third-growth stands—are today largely recovered and being carefully managed for long-term sustainability.

The township straddles two watersheds, namely those drained by the Au Sable and Manistee Rivers, both world-famous for their recreational fisheries. Equally valuable are the shared resources that underlie the township: a substantial reservoir of freshwater contained by the earth's highly pervious mantle typical of northern Lower Michigan, together with several deeper oil- and gas-bearing geological formations.

Table 4 – Natural resources of Frederic Township, by type, name, extent and description

Type	Name	Extent	Description
Forest Public, managed	Au Sable State Forest	31,766 acres	Subdivided into 21 management compartments, that part of the forest in Frederic Township consists mainly of mixed-age aspen (22%), 50- to 100-year-old oaks (19%), 25- to 75-year-old jack pine (15%), 50- to 75-year-old northern hardwoods (15%) and 30- to 80-year-old red pine (10%); other cover types make up the remainder. It includes (in the township's northwest sector) roughly 2,400 acres of the Deward Management Area, delineated in 1986 to give added protection to the Manistee River corridor. The forest also provides habitat for good populations of game, such as deer, grouse and turkey, and opportunity for a wide variety of outdoor recreation.
Private, largely unmanaged	—	≈11,000 acres	Similar in cover types to adjoining public land; used mainly for temporary residential and recreational purposes.
Soils	—	Entire	Highly permeable sands with little gravel, frequently underlain by lenses of clay and silt; typical of glacial moraines and outwash plains. Must be carefully evaluated <i>before</i> proposed accommodation of development.
Surface Water Streams	Upper Au Sable River (Natural River designation)	9.5 miles	High-quality, very stable, low-discharge coldwater stream beginning close to system headwaters (in Otsego County) at confluence of Bradford (3.5 mi.) and Kolka (4.0 mi.) Creeks and coursing north to south in east half of township. Home to marginal self-sustaining populations of brook and brown trout, which support only a modest fishery; aquatic habitat diminished by excessive streambed sand deposition.

Streams	Upper Manistee River (Natural River designation)	16.0 miles	Equally high-quality, exceptionally stable, moderate-discharge cold water stream entering township just below its origin (in Antrim/Otsego Counties) and draining north to south in west half of township (Fig. 2), with Goose Creek (3.0 mi.) being its only significant tributary. Home to excellent self-sustaining stocks of brook and brown trout, which support an important and renowned fishery.
Lakes and ponds	Cranberry, May, Camel, Sand Hill, Howes, Lost	<150 acres	Small bodies of water, mostly on public land, the largest of which is Lost Lake (≈45 acres) in the northwestern-most section of the township. Each harbors marginal populations of cold- and/or warm water game fishes.
Ground Water	—	Entire	Large, high-elevation aquifer overlain by highly permeable soils; expressed by two surface drainages—Manistee and Au Sable—whose boundary splits the township almost evenly from north to south; some interbasin exchange is speculated.
Mineral Gas Oil	Antrim Formation Niagaran	36 wells ¹ 37 wells ¹ <5 acres	Part of a large regional and fairly productive reservoir; projected life: 20-25 years. Part of a regional and moderately productive reservoir.
Gravel See Figure 3	Formation		One state-managed pit in North Frederic Township.
Fish and Wildlife	—	Entire	Variably marginal to excellent stocks of cold- and warm-water fishes in surface waters as noted above. Generally good but annually fluctuating populations of both resident and migratory wildlife—notably whitetail deer, waterfowl, turkey, ruffed grouse, fox, coyote, snowshoe hare, cottontail rabbit, occasional black bear, various furbearers, raptorial birds, notably bald eagle, and passerine birds, notably Kirtland's warbler.

¹ Confined to North Frederic Township

Sources: MDNR, USGS

Existing Land Use

The following map shows the land cover use for Frederic Township as depicted in the 2014 Township Master Plan. Upland forests cover over three quarters of the Township. The dominant forest associations are maple, aspen and pine. Much of the forested lands are on public property owned by the State of Michigan or the Federal government. Upland openings, lowland forests and nonforested wetlands account for another 10 percent of the township's area. These forestlands and wetlands combined with two blue ribbon trout streams support natural resource-based recreational activities.

Frederic Township Existing Land Use/ Land Cover Map

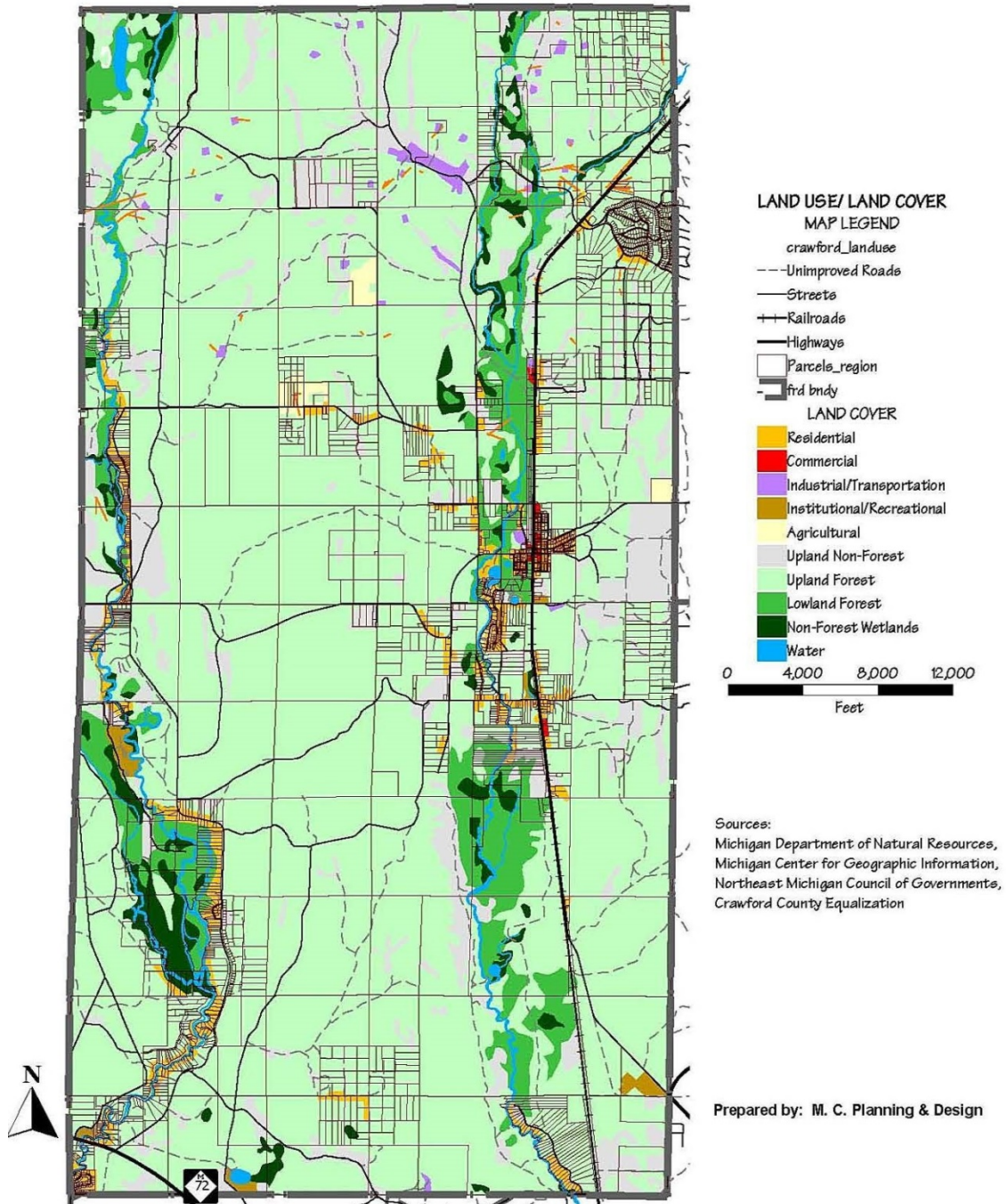


Figure 2 - Existing Land Use

Recreation Planning in Frederic Township

The Township provides limited recreation services and facilities to residents and visitors. The mix of Township owned facilities such as the Township Hall Community Center, Eagle Park and Betty Sadjak Memorial Park, along with other publicly owned State Forest lands and campgrounds and privately owned recreation facilities offers a wide range of passive and active recreational opportunities. A description of these facilities is included in the recreation inventory, which follows. Frederic Township intends to continue providing recreation services to its residents and visitors, but also plans to make improvements at the existing facilities, including compliance with Americans with Disabilities Act (ADA), which mandates accessibility standards for citizens who have mobility difficulty.

As a recreation service provider, the Township recognizes the importance of planning for future recreation services and facilities. A major factor in the provision of any service is the question of how projects will be funded. One possible source of funding for recreation projects is through grants available from Michigan Department of Natural Resources (MDNR).

To become grant eligible for MDNR funding, a community must have an approved recreation plan. Components of a MDNR approved recreation plan include:

- Community Description
- Recreation Inventory
- Administrative Structure
- Description of the Planning Process
- Action Program
- Basis for the Action Program
- Plan Review and Adoption

Administrative Structure and Funding in Frederic Township

Frederic Township established a separate Parks and Recreation Committee in 2012 that oversees the general operation of the township parks and recreation programs. This Committee provides recommendations regarding park policies and projects to the Township Board.

The Parks and Recreation Committee and Township staff serve as a community sounding board on recreation matters, and bring the concerns of the residents to the Township Board for consideration. Routine park maintenance is handled by the Township staff, contractors and volunteers who operate under the direct authority of the Township Board. The ultimate decision-making authority and responsibility for all park related projects resides with the Township Board.

Volunteers will be an integral part of the recreation projects in Frederic Township. While there is not a designated volunteer group, volunteers are solicited on a project by project basis to provide some of the labor for the Township “in-kind” match on projects as appropriate.

Relationships: This recreation plan covers Frederic Township, while the Crawford-Au Sable School District serves a larger geographic area than Frederic Township. The school district still owns some property for storage which is associated with the former elementary school in Frederic village. The majority of the former elementary school property including the main building has been transferred to Frederic Township.

In order to effectively develop local routes that connect with the larger trail system in northern Michigan, Frederic Township will be working cooperatively with the Top of Michigan Trails Council, Northeast Michigan Council of Governments (NEMCOG), MDNR, and Crawford County to pursue the development of non-motorized trails and bike lanes. Additionally, the Township will work cooperatively with the Au Sable Valley Snowmobile Association and other organizations to expand the network of trails for snowmobiles.

The Frederic Township Recreation Plan does include provisions to continue and enhance the working relationship with the Michigan Department of Natural Resources as related to the state-owned recreation facilities located within Frederic Township.

Table 5. Township Budget and Recreation Expenditures, 2016-2019

Frederic Township Budget			
FY Ending June 30	2016-2017	2017-2018	2018-2019
Recreation	\$56,000	\$37,500	\$30,000
Total Township	\$1,393,024	\$1,647,878	\$1,955,377
Expenditures			
Recreation	\$49,664	\$29,250	\$8,250
Source: Frederic Township Balance Sheets, 2016-2019			

Status Report of all Grant-Assisted Parks and Recreation Facilities

Frederic Township has not previously pursued or received grants to assist with the acquisition or development of park and recreation facilities. Within Frederic Township, the Crawford County Road Commission has received MDNR funding to study and plan to determine the best route for the Iron Belle Trail through Frederic Township. According to MDNR records, no Trust Fund grants have been received to acquire or develop any park or recreation facility in the Township.

The Township received a Recreation Passport grant in 2015 for development at Betty Sadjak Park. The development included a basketball court, an accessible play structure, a vault toilet structure, picnic tables, benches, grills and landscaping.

Recreation Inventory

An inventory of existing recreation facilities located in Frederic Township is provided below. Sites are grouped according to ownership. Township owned facilities are listed first, then other public sites, privately owned recreation sites, and finally river access sites. Each listing is followed by a brief description of that location. Figures 3 and 4 illustrate the location of the public recreation sites and trails.

Frederic Township owns two recreation properties, the Township Community Center with the adjacent park (former school property) and the Betty Sadjak Memorial Park near the fire hall.

Table 6. Facilities Owned and/or Operated by Frederic Township

Name	Facilities	Needs for ADA Compliance
Betty Sadjak Memorial Park	Playground, picnic tables, basketball court, walking path and gazebo	none
Frederic Community Center/ Township Hall	Meeting rooms (Capacity___), offices, Full kitchen, Gymnasium, Picnic area, playground/tot lot and multi-purpose fields	none
Frederic Community Library (in Community Center building)	Stacks, computer area	none

Table 7. Public Recreation Facilities in Frederic Township

Name	Recreation Sites Location Key (unless specified- Figure 3)	Facilities / Amenities
Upper Manistee River State Forest Campground	F	30 campsites, 10 walk-in sites, canoeing, fishing, group camp for canoeists
Goose Creek Trail Camp	G	campsites, canoeing, hiking, horseback riding, wildlife viewing, fishing—max 200 individuals
Manistee River Bridge Campground at M72	H	23 campsites, canoeing, fishing, canoe access
Frederic Snowmobile Trail Head CR612 east of Old 27	See Figure 4	Parking lot and trail access
Snowmobile Trail Head CR 612 near Manistee River	See Figure 4	Parking lot and trail access
Frederic Loop Trail	See Figure 4	ORV trail

Table 8. Private Recreation Facilities in the Township

Name	Recreation Sites Fig 3 Key	Facilities
Happi Days	C	Campground (40 sites) – rustic and full facility sites, showers and Restaurant
Trails Campground	D	Campground, showers, laundry
Long's Canoe Livery	B	Manistee River canoe, kayak and tube rentals
Shel-Haven Canoe Rental	A	Manistee River canoe, kayaks & tubes rentals, snacks & souvenirs.
Whispering Pines	E	Campground, cabins and showers

Table 9. River Access Sites in Frederic Township, Key to Figure 2 Map

Au Sable River			
Map Key	Name	Location	Access considerations
1	CR612	Between Old 27 and Kolke Creek Road, center of Frederic	Improved access site on the north side of the road. Stairs to river. Limited parking.
2	Old Mill Site	Between CR612 and May Lake Road	Access on the east side is via a two track just east of the river. Access on the west side of the river is via 2 two track trails off of CR612 and one two track off of May Lake Road. Parking is limited but adequate.
3	Batterson Road	Between Old 27 and Sand Hill Road	Access is via a stairway on the south side of the road. Parking is limited.
4	MacArthur Property	To the west off Old 27 at a marked railroad crossing sign (two track trail has no name designation).	An adequate parking area is approximately one mile off Old 27. There is a short walk to the river.
Upper Manistee River			
5	Deward Area	There are multiple access sites off N. Manistee River Road. Access is via a two track trail. Many of the site have been identified by "Observation Signs" that look like binoculars. In addition there is one access site on the west side of the river.	There is limited parking at all sites and a walk back to the river. A couple of the sites have stairs down to the river.
6	Cameron Bridge	Between N. Manistee River Road and Deward Road on Cameron Bridge Road.	Access is on the north side of the river. Parking is very limited.
7	CR 612 Bridge	Access via stairs at SE corner of bridge.	Parking along road, seasonal temporary restroom facility (port-a-potty).
8	Goose Creek Campground	On the west side of Manistee River Road. There is a sign that marks the campground.	There is adequate parking and stairs and a ramp to the river. Canoes and kayaks have to be carried to the river.
9	Upper Manistee Campground	On the west side of the river off Goose Creek Rd. The campground is marked.	Access to the river is a short walk. There is adequate parking.
10	Loggers Fish Access	This access is marked and on the west side of Manistee River Road.	There is limited parking and a short walk to the river.
11	Manistee River Bridge Campground	On the west side of the river off M-72.	There is limited parking and sites where a canoe or kayak could be launched. The bank is relatively steep.
12	M-72 Access site	This is on the SE corner of the river off M-72.	There is limited parking.

Frederic Township Recreation Sites Map

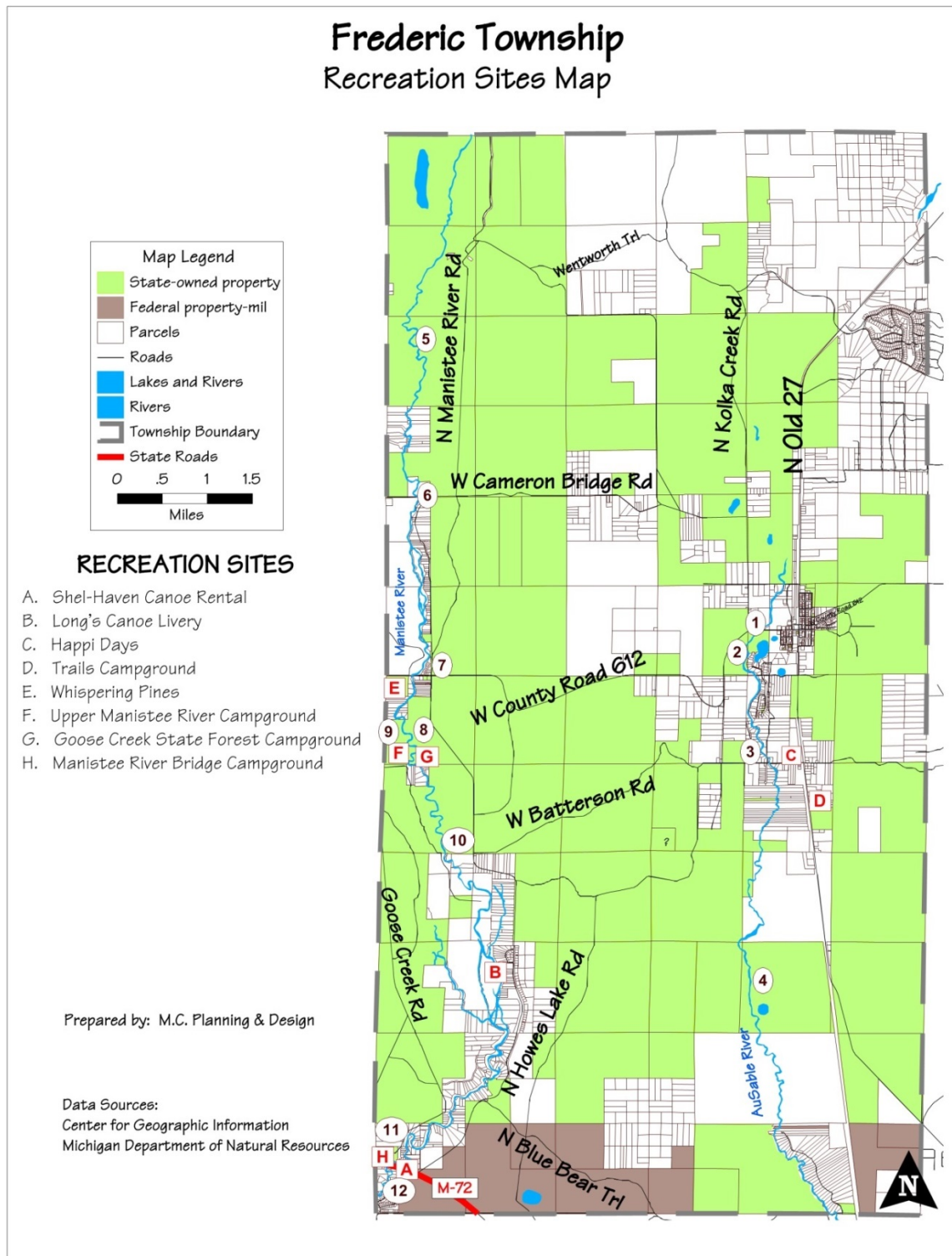


Figure 3 – Recreation Sites Map

Used with written permission.

Figure 4. Frederic Township Snowmobile and ORV Trails.

Grayling Region 4-Season Recreation Map- 2011-12
Frederic Township- Excerpt for Snowmobile and ORV Trail Locations



Description of the Planning and Public Input Process

Planning Process

The Parks and Recreation Committee was the entity responsible for overseeing the update of the Recreation Plan. The committee began the process in November of 2018 by hosting a public input workshop. The Committee worked on various ideas during the following year and decided to update the plan during the summer of 2019. They met in early November of 2019 to discuss and revise the plan. NEMCOG assisted the township's committee and the Planning Commission in assembling a draft plan. The Parks and Recreation Committee met jointly with the Township Planning Commission to review the draft and release the draft for public review.

The preliminary draft plan was posted on the Township website and made available at the Library on November 20, 2019. Frederic Township held a public hearing on January 8th, 2020. A legal notice was published in the Crawford County Avalanche newspaper at least 30 days prior to the public hearing to allow citizens ample time to review and comment on the draft plan. A web posting helped announce the availability of the draft plan. Minutes from the public meetings and public hearing minutes are included in Appendix A. The Recreation Plan was adopted by the Frederic Township Board of Trustees on _____, 20__.

Public Input

Public input was gathered through a 2018 public workshop and then a survey which was made available both in hard copy and on-line in October of 2019. There were a series of Parks and Recreation Committee public meetings as well as an advertised public hearing on the Recreation Plan. Minutes from the various meetings and public hearing are provided.

The Frederic Township Parks and Recreation Committee prepared a survey for general planning purposes to gauge public support for various recreational improvements. A total of _____ completed surveys were submitted. A summary of the results are located on the Township's website at www.frederictownship.org.

Goals and Objectives

The recreational goal and objectives presented below are the result of the Parks and Recreation Committee planning process, the public input received during that process, and the further refinement and expansion during the subsequent recreation plan development.

<i>Recreation Goal</i>	
GOAL: <i>Provide and maintain recreation lands and facilities for safe access and enjoyment by residents and visitors.</i>	
OBJECTIVES:	
A.	Recreation Paths: Pursue extension of the Crawford County multiuse pathway through Frederic up to Otsego State Park to provide a direct connection to Grayling and points north. Where the pathway comes through the Village of Frederic a streetscape with enhanced street lamps and landscaping should be built to compliment the pathway and encourage investment in Frederic.
B.	Non-motorized routes: Ensure adequate routes exist for safe and enjoyable non-motorized travel throughout the Township, especially along desirable routes.
C.	Recreation Inventory and Publication: Publish online and in print an inventory for residents and visitors of the principal access points to public camping, picnicking, angling, historic interest and hiking venues.
D.	Historic Interpretation: Establish a Frederic history display/museum in the Township Hall and install signs of historic interest in Betty Sadjak Memorial Park, at river crossings and at mill sites on the Au Sable and Manistee rivers.
E.	Betty Sadjak Memorial Park: Replace existing dying trees and upgrade park fencing.
F.	Eagle Park and Community Center: Pursue redevelopment of the former school property for a multipurpose athletic field, playground, picnic pavilion, sand volleyball court, splash pad/spray pool, restrooms, outdoor stage, indoor recreation facility and community center.
G.	Au Sable River Access: Upgrade river access at the CR 612 and Batterson Road bridges and establish a community park and access site on the Au Sable River on state land south of CR 612 (Old Mill site) and near Sand Lake off of Old 27 (McArthur Property).
H.	Manistee River Access: Upgrade the river access sites at M72, CR 612, Cameron Bridge Road, and Deward to enhance parking, minimize erosion, and interpret natural and historic resources.
I.	Funding Assistance: Seek grant funding for park and recreation improvements.

Action Program

The action program is presented below in two tables that describe improvements to existing facilities and the development of new facilities. Anticipated funding sources will be in the form of cash from the Township general fund, in-kind labor, and Michigan Department of Natural Resources (MDNR) grants. Sources of the grants are: Land and Water Conservation Fund (LWCF), Michigan Natural Resources Trust Fund (MNRTF), and other appropriate grant programs.

Table 10. Capital Improvements Schedule for Existing Properties/Facilities

Existing Facilities	Year	Activity/Development	Estimated Cost and Anticipated Funding Sources
Betty Sadjak Memorial Park	2020	Plant trees	Cost estimates under review MDNR, local foundations, service group grants and Township
	2020	Paint Basketball Court Lines	Cost estimates under review MDNR, local foundations, service group grants and Township
	2024	Upgrade Park Fencing	Cost estimates under review MDNR, local foundations, service group grants and Township
	TBD	Community garden at empty township lot across CR 612	Cost estimates under review MDNR, local foundations, service group grants and Township
Eagle Park and Community Center	2020	Sand volleyball court	Cost estimates under review MDNR, local foundations, service group grants and Township
	2021	Renovate Multipurpose athletic field, splash pad/spray pool	Cost estimates under review MDNR, local foundations, service group grants and Township
	2021	Picnic pavilion, outdoor stage	Cost estimates under review MDNR, local foundations, service group grants and Township
	2023	Restrooms – accessible from outside	Cost estimates under review MDNR, local foundations, service group grants and Township
	2024	Upgrade play structures, including adding handicapped and infant swings	Cost estimates under review MDNR, local foundations, service group grants and Township

Rationale for Township Park Improvements

The proposed recreational improvements to the Betty Sadjak Memorial Park and at the Eagle Park and Community Center, will provide more comprehensive recreational opportunities for a wide range of ages in the central portion of the Township. The playground equipment for younger children does not meet current standards, is potentially unsafe and needs to be replaced. The basketball court used by teens and adults is in need of resurfacing. By incorporating more facilities to serve a wider age range, the area will attract more family and community use of both properties, thus facilitating the need for benches and picnic related facilities. In addition, Betty Sadjak Memorial Park is the site of community wide events, including music festivals, requiring support facilities such as electrical hookups, a stage and restrooms.

Table 11. Capital Improvements Schedule for Trails and Access Sites

Facilities	Year	Activity/Development	Estimated Cost and Anticipated Funding Sources
Non-motorized trail	2023	Provide 5.9 miles non-motorized trail along Old 27 from Frederic south to ultimately connect with the Crawford County Recreation Path and Hartwick Pines State Park and other trail systems.	\$236,000 (approx 40,000/mi) MDOT, MDNR, Road Commission, local foundations/grants and Township
	2023	Provide 4.9 miles non-motorized trail along Old 27 from Frederic north to ultimately connect with Otsego State Park and other trail systems.	\$195,000 (approx 40,000/mi) MDOT, MDNR, Road Commission, local foundations/grants and Township
Au Sable River Access 1	2024	MacArthur Property – Work with DNR to provide closer access to the river, particularly for the physically challenged and to install restroom facilities, interpretive trails, a fishing dock, road improvements and expanded parking.	Cost estimates under review DNR, Natural Resources Trust Fund and Local Service groups
Au Sable River Access 2	2020/2023	Old Mill Site-Develop a community park and access site in cooperation with DNR on State land south of 612.	Cost estimates under review DNR, Natural Resources Trust Fund and Local Service groups
Manistee River Access	2024	Upgrade access sites at M-72, CR612, Goose Creek Campground and Cameron Bridge Road to enhance parking, control erosion, interpretive signage for natural and historic resources, and interpretive signs for five access sites in the Deward Area.	Cost estimates under review DNR, Natural Resources Trust Fund and Local Service groups

Rationale for Trail and Access Site Improvements

There is a need and significant public interest in to provide safe pedestrian and bicycle routes throughout the Township and specially to connect to other existing and proposed trail networks in the region. A separated non-motorized pathway is the preferred option for providing a safe route for many different user groups. The first priority is from Frederic south along Old 27, then north along Old 27 and ultimately to have some east–west routes.

The Township is very interested in working cooperatively with the Michigan Department of Natural Resources for the development of a low-impact passive recreation area, including an improved and universally accessible fishing dock at the MacArthur Property, as well as improved access at CR 612 (Old Mill Site).

Property Acquisition

Frederic Township is ultimately interested in pursuing a long-term lease for the Old Mill Site (located on CR 612) from the MDNR, but does not anticipate doing so until approximately 2023, and the cost of such is unknown at this time.

Plan Review and Adoption

The Frederic Township Board held a public hearing on the Recreation Plan on _____. The Township Board subsequently adopted the recreation plan on _____, a copy of the hearing minutes and resolutions of adoption are included in Appendix A.

Recreation Plan adoption resolution

The Recreation Plan was adopted by official resolution, by the Frederic Township Board of Trustees on _____ and a copy of the resolution is included in Appendix A.

Transmittal to the Regional Planning Agency.

The adopted plan was transmitted to the Northeast Michigan Council of Governments on _____, a copy of transmittal letter is provided in Appendix A.

Transmittal to the County Planning Agency.

The adopted plan was transmitted to the Crawford County Planning and Zoning Department on _____, a copy of transmittal letter is provided in Appendix A.

Recreation Plan Certification

A copy of the Recreation Plan Certification is in Appendix B.

Description of the Recreation Planning and Public Input Process